

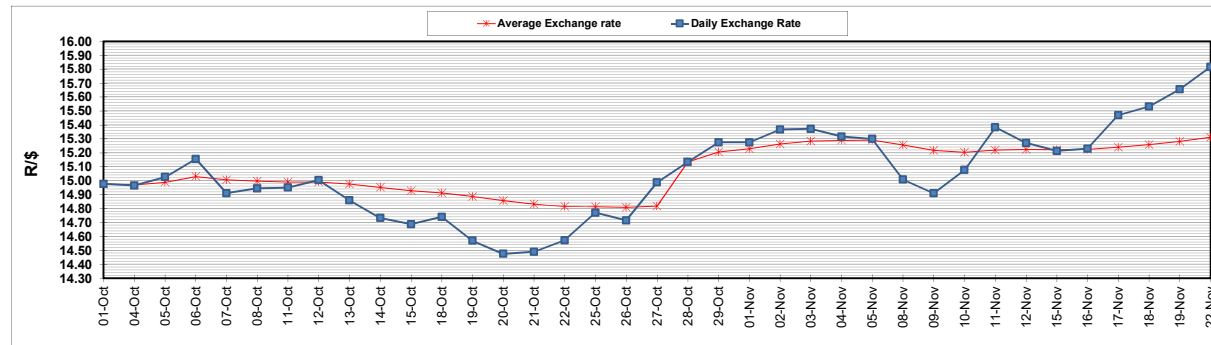
	PETROL 95 ULP	PETROL 93 ULP & LRP	DIESEL 0.05%	DIESEL 0.005%	ILL. PAR.
GAUTENG PUMP PRICE (SA c/l) AS FROM 03/11/2021	1,954.000	1,932.000	-	-	-
WHOLESALE PRICE (SA c/l) AS FROM 03/11/2021	-	-	1,719.980	1,723.380	1,125.488
SINGLE NATIONAL MAXIMUM RETAIL PRICE	-	-	-	-	1,433.000
BASIC FUEL PRICE - 22/11/2021 (SA c/l)	915.918	902.347	913.082	918.965	902.697
PRESS RELEASE CONTRIBUTION TO BFP 03/11/2021 - 22/11/2021 (SA c/l)	937.110	925.110	917.630	921.030	912.128
UNIT OVER/(UNDER) RECOVERY - 22/11/2021 (SA c/l)	21.192	22.763	4.548	2.065	9.431
AVERAGE BASIC FUEL PRICE 28/10/2021 - 22/11/2021	953.063	934.206	925.967	931.770	916.767
AVERAGE UNIT OVER/(UNDER) RECOVERY 28/10/2021 - 22/11/2021	(42.353)	(35.497)	(40.782)	(43.183)	(36.861)

ANALYSIS MOVEMENT OF AVERAGE OVER/(UNDER) RECOVERY

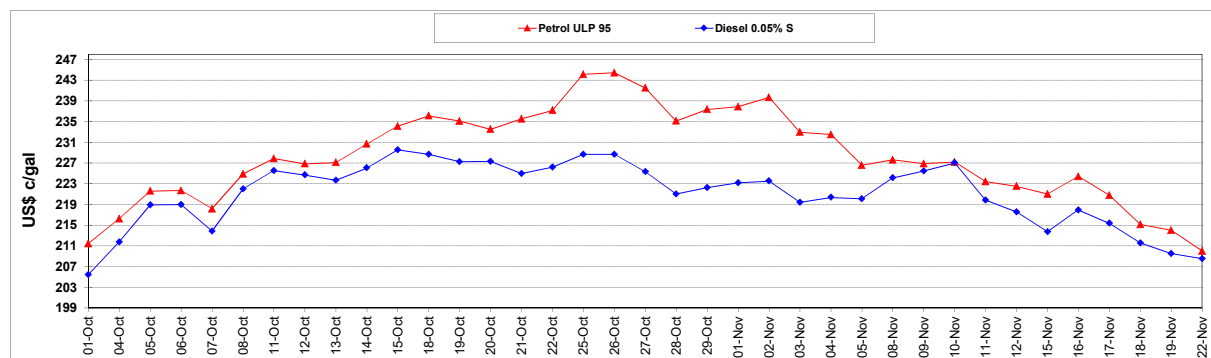
	PETROL 95	PETROL 93	DIESEL 0.05%	DIESEL 0.005%	ILL. PAR.
- MOVEMENT IN INTERNATIONAL PRODUCT PRICES	(11.610)	(5.361)	(10.912)	(13.128)	(7.289)
- MOVEMENT IN EXCHANGE RATE	(30.743)	(30.135)	(29.869)	(30.056)	(29.572)
AVERAGE UNIT OVER/(UNDER) RECOVERY 28/10/2021 - 22/11/2021	(42.353)	(35.497)	(40.782)	(43.183)	(36.861)

R/\$ EXCHANGE RATE - (R/\$15.8173 - 22/11/2021)

EXCHANGE RATE USED IN BASIC FUEL PRICE



INTERNATIONAL PRODUCT PRICES OF BASKET USED IN BASIC FUEL PRICE



BASIC FUEL PRICE IN SA CENTS PER LITRE

